

# NDVR8 Series Quick Start Guide

## 8 Outdoor/Indoor Night Vision Color Cameras with Mobile and Web Accessible Network Digital Video Recorder

### MOUNTING THE CAMERAS

1. Determine whether the camera will be wall or ceiling mount and then adjust the cameras viewing angle accordingly by loosening the two screws located on the neck of the mounting bracket with the hex tools provided.

**NOTE: Please test by plugging in all cameras to the recorder prior to mounting. MOUNTING THE CAMERAS is not applicable for NDVR8 Bare Systems.**



WALL

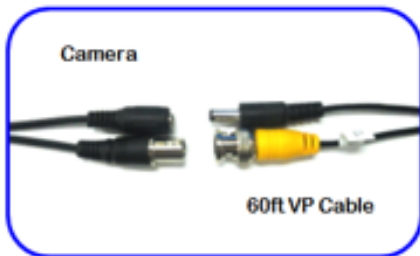


CEILING

2. Secure the cameras in the desired location using the dry wall screws provided. Make sure not to mount them no more than 60 ft from the DVR (unless you have purchased additional BNC cable). Adjusted the camera viewing angles to a desired position.



3. Connect the power and video (yellow) male ends of the 60ft VP cable to the female ends of the camera. To prevent electric shock or damage to the camera, please make sure to properly insulate (not included) the camera's power connections if being used as an outdoor application as shown below.



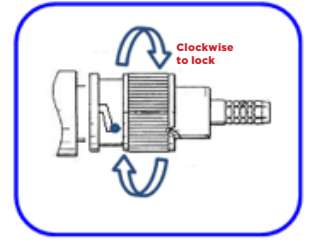
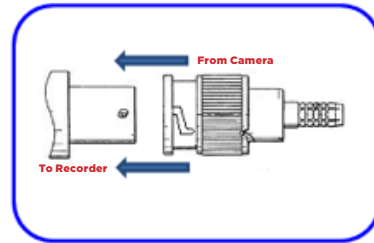
60ft VP Cable



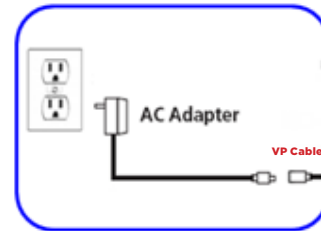
Outdoor Application

### CONNECTING THE CAMERAS TO THE DVR

1. Now that you already have the cameras mounted and the cable ran, it's time to connect them to the DVR and power them up. The first thing you want to do is get the female end of the BNC video cables and connect them to the DVR making sure that you plug-n-twist the BNC connector clockwise to secure.

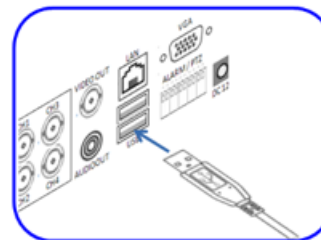


2. The last step in setting up the cameras is to power them up. Plug in the cameras AC adapter into a wall outlet, and then insert the other end into the power socket located at the end of the VP cable of the camera as shown below.



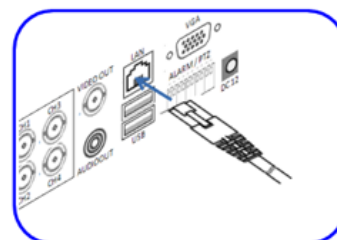
### CONNECTING THE MOUSE

1. Plug in the USB connection of the mouse to one of the two USB port located on the back of the DVR as shown below.



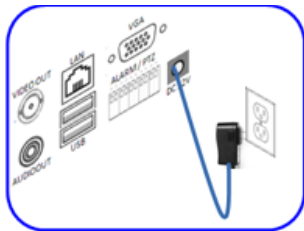
### CONNECTING THE ETHERNET CABLE (cable not included)

1. Insert the Ethernet cable that is connected to your network router or switch into the DVR's "LAN" Ethernet port located above the two USB ports on the back of the DVR.

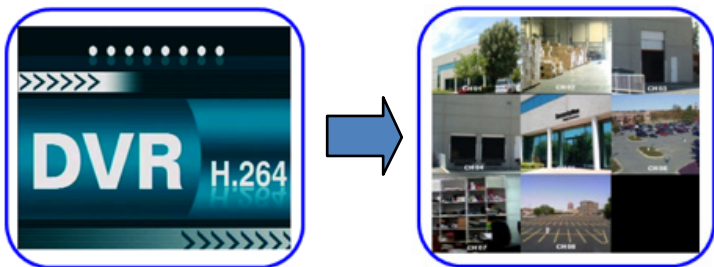


## POWERING UP THE DVR

1. Insert the power adapter into a wall outlet or surge protector (recommended). Then insert the power jack into the 12VDC power socket located on the rear of the DVR as illustrated.



2. The DVR will automatically turn on as soon as you plug in the power jack into the DVR's power socket. At start up, the DVR will display the "H.264" start up screen which will then switch to a live view of all 8 cameras after 20 seconds.



## LOGGING INTO THE DVR

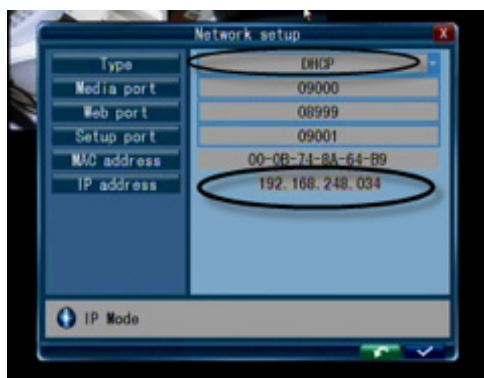
1. In order to playback, change settings or use any of the menu options you must first login to the DVR. To do this you can press the MENU button (twice) located on the front of the DVR or simply RIGHT CLICK (twice) anywhere on the screen using the mouse to bring up the USER LOGIN screen. When prompted select the user name that you wish to login with and input the password that is associated with the user. There are two user names/passwords that have been created by default and they are:

- User Name: **Admin** Password: **888888**
- User Name: **user1** Password: **666666**

Click on the white check mark located on the bottom right corner of the login window to login.

## DVR NETWORK SETUP

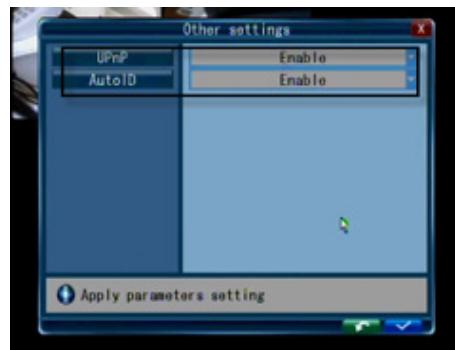
1. After you successful login to the DVR, advanced to **System Settings/Network/Network** to select "DHCP" (Recommended) under Network Setup "Type" as illustrated below.



1. After selecting the "DHCP" click on the  (white check mark) button to save the setting and exit out from Network Setup. To check what IP address as been auto assigned to the DVR, go back into the Network Setup, please **jot down the IP address & 8999 web port.**

**IMPORTANT NOTE:** What you just jotted down is your local IP address used to remote access from within your Local Area Network; this illustration shows the IP address of 192.168.248.034. Please be noted that this local IP address will NOT work if you are remote accessing from the Internet or Wide Area Network.

Next, advanced to System Settings/Network/Network and then to "Other Settings" to set "ENABLE" both the UPnP and the AutoID as illustrated below.



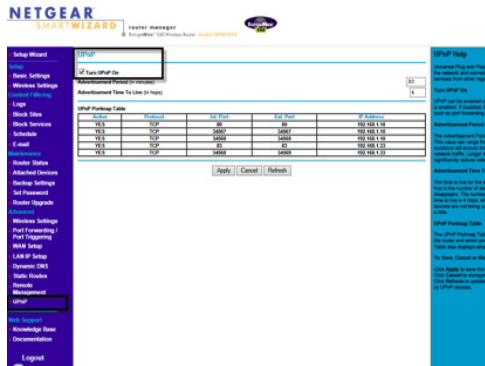
After both options are enabled, click on the  (white check mark) button to save the setting and exit out from Other Settings.

2. Finally, **jot down the ID** which can be found behind the DVR and in **System Settings/System/User** as shown below. The AutoID is used for when you are remote accessing from the outside of your network such as from the Internet or Wide Area Network (WAN).

**IMPORTANT NOTE:** Please note that the AutoID cannot be used in your Local Area Network (LAN).



To finish setting up the DVR for WAN remote access required setting the "UPnP" to "Enable" in your local router setting. Here we illustrate using a NetGear (Model: WPNT834) router to enable the UPnP setting.



## REMOTE ACCESS USING INTERNET EXPLORER

### ActiveX controls and Plug-ins:

1. Enable all Active X controls located in your in your IE Internet options. To do so, click on "Tools> Internet Options" as shown below [IMAGE #1/#2].

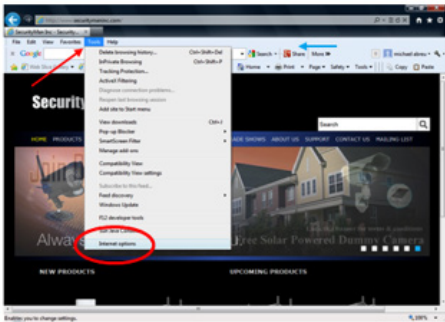


IMAGE #1

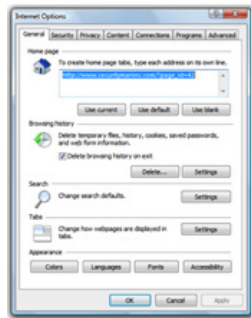


IMAGE #2

2. Click on the "Security" tab as shown in IMAGE #3. Then click on "Internet" and "Custom level". In the Security Settings window, please set "Enable" everything under "ActiveX controls and plug-ins" as illustrated in IMAGE4. Click OK button to accept and exit out from Security Settings and click "Yes" to accept the confirmation.

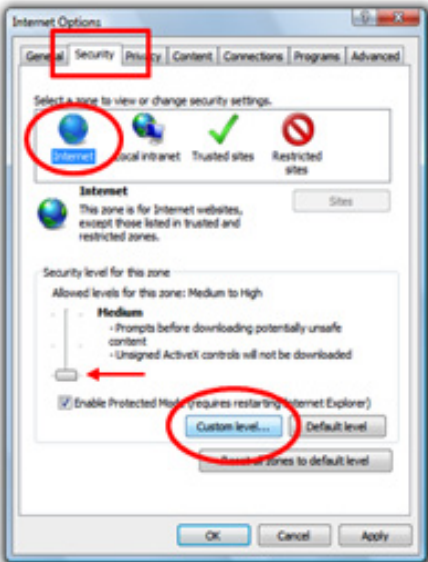


IMAGE #3

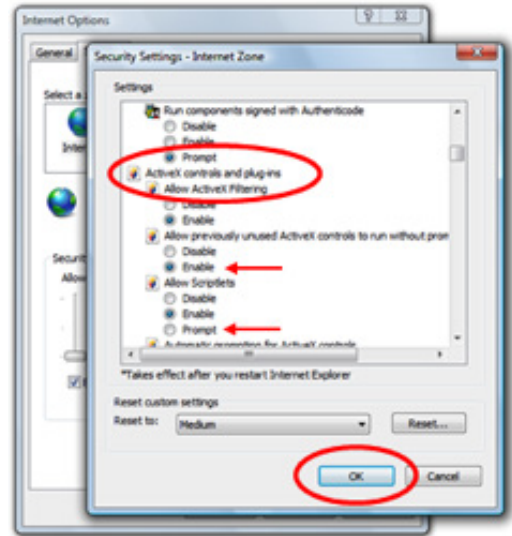


IMAGE #4

3. After confirming your changes, click on "Apply" and "OK" (red arrow) to close the Internet Options as shown in IMAGE #5.

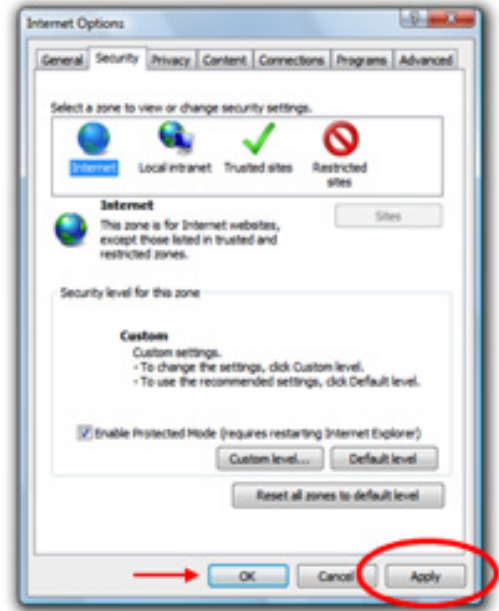


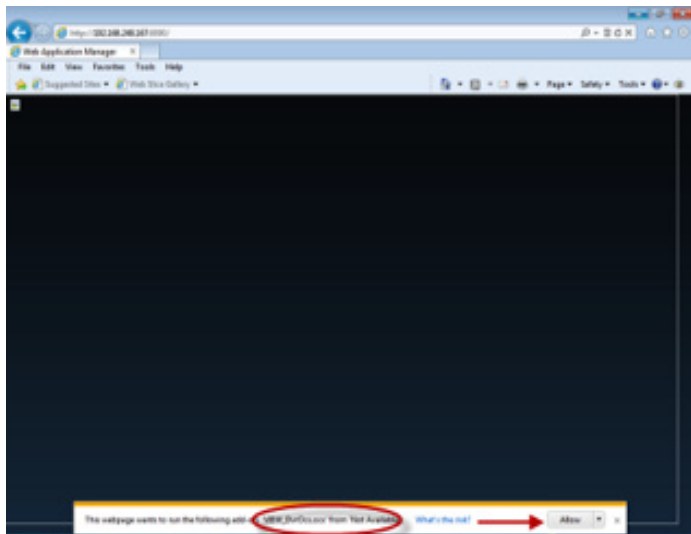
IMAGE #5

### Remote access within the same network (LAN):

1. After the ActiveX controls and plug-ins setup, open by right mouse clicking on the IE browser and then select "Run as administrator" on the computer that is outside of your network. Once the browser is opened and type " http://www.ipremoteview.com " in the URL.

**NOTE:** If http://www.ipremoteview.com does not work, please use our alternative server http://www.ipremoteview.cn for AutoID remote access.

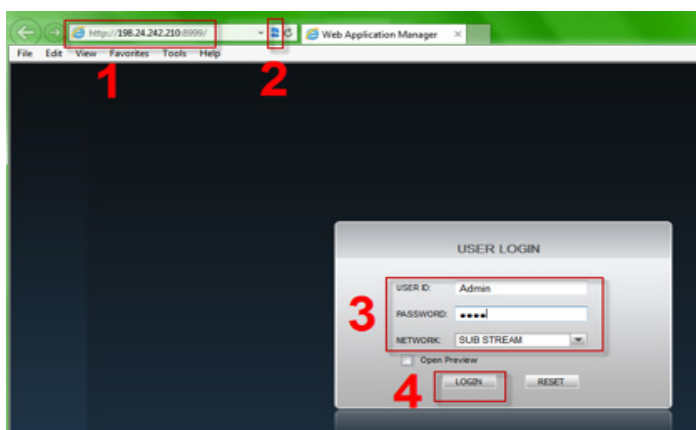
2. After pressing ENTER, you will be prompted to install the "VIEW\_DvrOcx.ocx" when logging in for the first time. Please click on the "Allow" button to install the required plug-in as illustrated with the red arrow below.



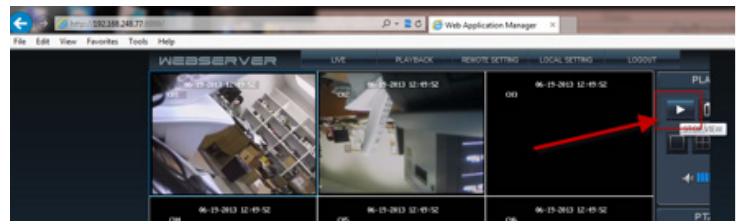
- At the login screen as shown below, click on Compatibility View as shown in "2", then input the ID that you should have jotted down under the DVR Network Setup step 3 section as shown in "3" below, and the click on Submit button.



- After submitting, a window as shown below will appear. The address and port number shown in step "1" below are automatically generated by our AutoID server. Next, click on the Compatibility View button as shown in "2", input "Admin" for the default User ID and "888888" for the default Password as shown in "3", and finally click "Login" as shown in "4".



- On a successful login, click on the "START VIEW" button to start live video streaming from the IE browser as illustrated below.



**IMPORTANT NOTE:** Although the DVR is truly a plug and play device there are some cases that you may need to forward ports **8998 (for Smartphone)**, **8999 (Http Port)**, **9000 (Media Port)**, and **9001 (Setup Port)** in your local router for Internet remote access in Wide Area Network environment.

## REMOTE ACCESS IPHONE

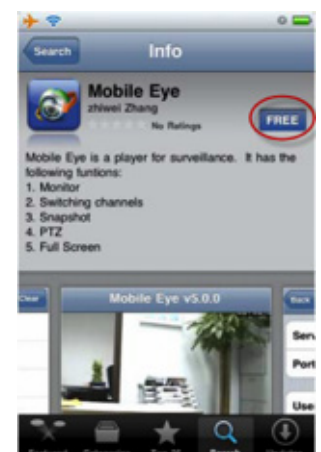
### Downloading Application for iPhone:

- Open the App Store and search for "MobileEye" as shown in IMAGE #1 and then select the free app from the list of apps found [IMAGE #2].

**NOTE:** Although the app is free, you still need to have an iTunes account (Apple ID) in order to download and install the app.



**IMAGE #1**



**IMAGE #2**

- Select the "Free" option from the app description screen and then select the "INSTALL" option as shown in [IMAGE #3]. Enter your Apple ID & Password when prompted [IMAGE #4]



**IMAGE #3**



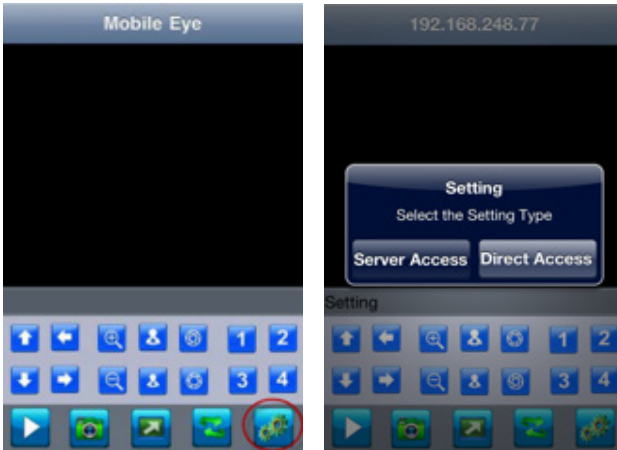
**IMAGE #4**

- Then MobileEye will begin the installation process as shown in [IMAGE #5]. After the installing process is completed, the MobileEye icon will be created as shown in [IMAGE #6]. Simply tap on the installed Mobile Eye to start the application.



**Using Mobile Eye Application:**

- In the Mobile Eye application, tap on “Setting” located at the bottom right corner of the live view screen to enter the application settings and options interface as shown below.



- Select “Direct Access” to connect to the DVR by manually inputting in the IP address (LAN or WAN IP Address) or select “Server Access” to connect to the DVR by using the AutoID (for WAN remote access only) as shown below.



**Direct Access**

**Server Access**

**The Direct Access “Settings” screen consists of the following configuration options:**

- Server ID: - The IP address of your DVR or Router depending on whether you are accessing your DVR from within your network or outside your network. If you are remote accessing from within the same network of the DVR, please use the DHCP IP address that you should have jotted down under DVR Network Setup step 1. If you are remote accessing from outside of you network (WAN), please use the “Server Access” method as instructed below.
- Port - The mobile port number you assigned to the DVR. We recommend using the system default port “8998”.
- User ID - The user name used to login to the DVR, the system default name is “Admin”
- Password - The password associated with the user name, the system default password is “888888” for the “Admin” login.














**The Server Access “Settings” screen consists of the following configuration options:**

- Server ID: - The Server ID under the Server Access “Settings” is the AutoID in which you should have jotted down under DVR Network Setup step 3.
- User ID - The user name used to login to the DVR, the system default name is “Admin”
- Password - The password associated with the user name, the system default password is “888888” for the “Admin” login.

- When finished setting up either Server Access or Direct Access, tap on “Back” to save and exit out from settings. Next, press the button to start video streaming from your iPhone as illustrated below.



## SPECIFICATIONS

	NAME	ACTION
	Play/Stop	Starts and Stops the live view feed from the selected live view display box.
	Snapshot	Takes a snap shot of the current camera. *Images are saved in the “Photos” of the iPhone.
	Full Screen	Tap to bring up full screen display.
	Channel Group	Changes the “Channel Select” numeric values. Pressing the channel group button will change the values from 1-8 to 9-16. *Only applies to devices that are equipped with more than one channel.
	Channel Select	Used to select which channel to display on the live view screen. *Only applies to devices that are equipped with more than one channel.
	Setting	Setup Direct Access (LAN, WAN) or Server Access (WAN only) remote access.
	Tilt UP	Tilts the camera upward. *Only applies to cameras with PTZ capabilities.
	Tilt DOWN	Tilts the camera downward. *Only applies to cameras with PTZ capabilities.
	Pan LEFT	
	Pan RIGHT	Pans the camera to the right. *Only applies to cameras with PTZ capabilities.
	Zoom IN	Zooms in. *Only applies to cameras with PTZ capabilities.
	Zoom OUT	Zooms out. *Only applies to cameras with PTZ capabilities.
	Focus adjustment	Used to focus the image after zooming in/out. *Only applies to cameras with PTZ capabilities.
	Focus adjustment	Used to focus the image after zooming in/out. *Only applies to cameras with PTZ capabilities.
	Aperture adjustment	Lets you adjust the light level. *Only applies to cameras with PTZ capabilities.
	Aperture adjustment	Lets you adjust the light level. *Only applies to cameras with PTZ capabilities.