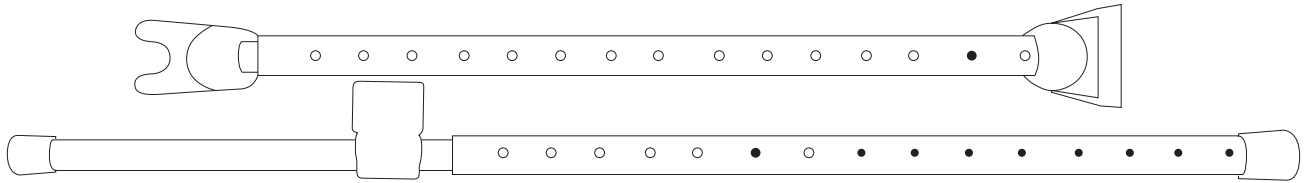


Adjustable Door and Window Security Bar Alarm



Introduction:

The SecurityMan SECURITYBARA™ is a heavy duty, dual function security bar made from high grade iron that can secure just about any hinged doors, sliding doors, and/or windows. The SECURITYBARA™ also comes with a 120dB "vibration activated" alarm for added security and is fully adjustable with an angled rubber bottom that assures full contact and strong grip on all types of floors without scratching them.

Features:

- Fully adjustable to ensure full floor and window contact
- Made of high grade iron for added strength
- Compatible with most hinged doors or sliding doors/windows
- Interchangeable caps for hinged door and sliding door/window usage
- 120dB vibration activated alarm for added security
- Up to one year battery life (1x 9Volt included)

Important

This guide provides important information on the use and operation of your SECURITYBARA and the images/features shown throughout the manual are subject to change without notice. Please read all the information carefully prior to using the product for the best performance and to prevent any damage/injuries or misuse of the device(s). Customers are entitled to have read through this complete user's manual before using the SECURITYBARA. Any unapproved changes or modifications will void your warranty. Please ensure to have a complete understanding of the following restrictions.

Restrictions:

When using this product, the safety precautions below must be taken to avoid legal liabilities and damages. Retain and follow all product safety and operating instructions. Observe all warnings in the product operating instructions. To reduce the risk of bodily injury and damage to the equipment, observe the following precautions.

- Always use door and window locks in conjunction with the security bar alarm.
- Always make sure that the caps at the end of the bar are pushed in tightly.
- Do not modify the security bar. Improper modifications can cause it to be inoperable and or cause damages to peripheral equipment.
- Never place the rubber foot of the SECURITYBARA on loose rugs or mats.

Contents:

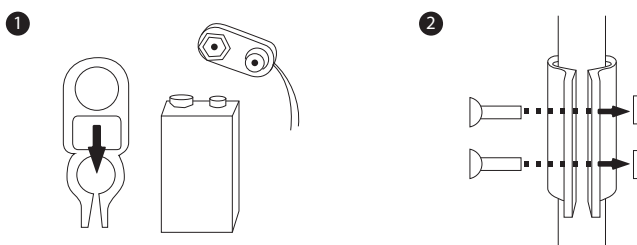


Setup & Installation

The SECURITYBARA can be used on both hinged and/or sliding doors and windows. The following guide will show you how to place the SECURITYBARA on both applications.

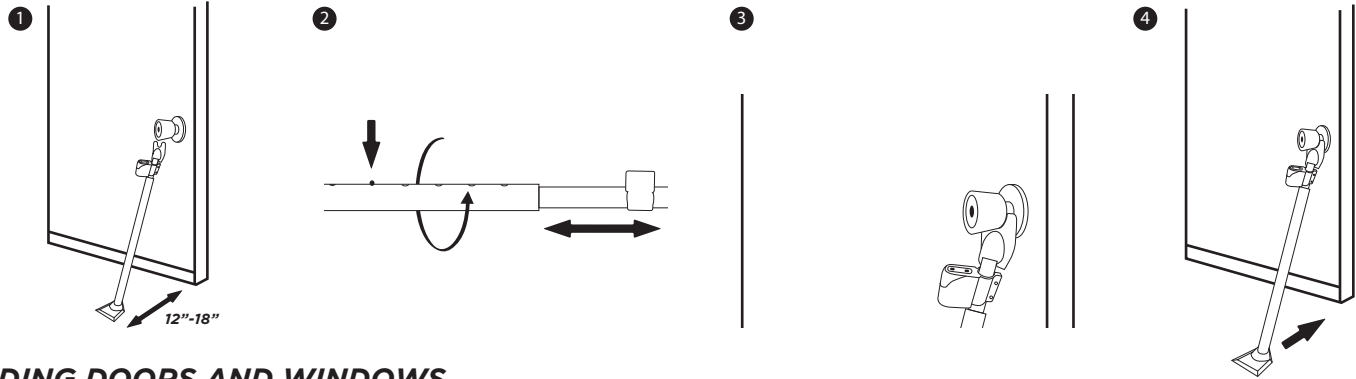
ATTACHING THE ALARM

1. Remove the battery compartment cover and connect the 9V battery to the battery cable. Once connected, insert the battery into the battery compartment and re-attach battery cover.
2. Grab the thinner of the 2 tubes and slide the alarm over the opposite side of the push-button end (On/Off buttons facing upward) of the tube. Then tighten the alarm into place.



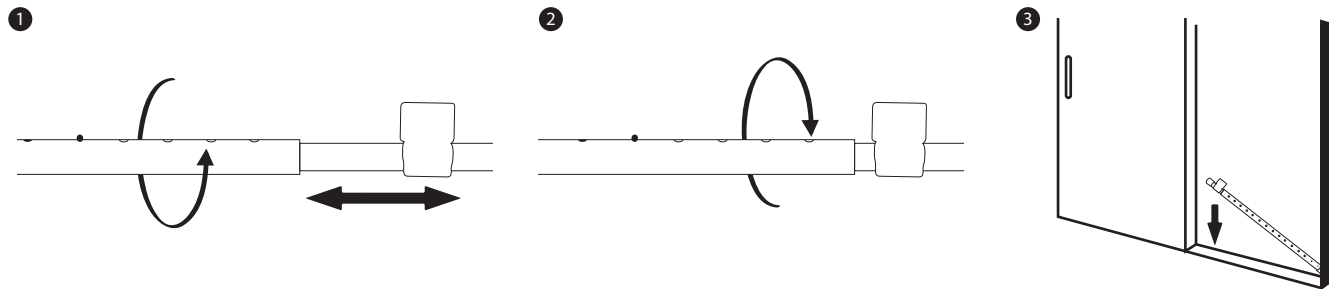
HINGED DOORS

1. Attach the rubber foot and fork to the ends of the SECURITYBARA and angle the rubber foot end 12-18 inches from the bottom of the door.
2. Adjust the length of the bar by press in the silver button and slightly rotate either tube so that the alignment holes and button are misaligned, then slide the smaller tube in or out to make your adjustments. Once you've reached the desired length, rotate the tubes so that the button and holes are realigned and the button pops back out of the alignment hole.
3. Place the flat fork end of the SECURITYBARA under the door knob of the door.
4. Slide the bottom foot in towards the door until its snug and tight. Once in place press and release the "on" button on the siren to activate it.
IMPORTANT: For maximum grip, please refrain from placing the rubber foot of the SECURITYBARA on loose rugs or mats.



SLIDING DOORS AND WINDOWS

1. Attach the white caps to the ends of the SECURITYBAR, and adjust the length of the bar by press in the silver button and slightly rotate either tube so that the alignment holes and button are misaligned, then slide the smaller tube in or out to make your adjustments.
2. Once you've reached the desired length, rotate the tubes so that the button and holes are realigned and the button pops back out of the alignment hole.
3. Place one the SECURITYBARA in-between the door/window and the door/window frame. Once in place press and release the "on" button on the siren to activate it.



Specifications:

2-in-1 Material Force	For door knob, sliding door, & window	Size	Outer bar 20.5"x1" / Inner bar 20.5" x .875" (without feet attached)
Material	High grade iron tube	Siren	120dB
Force	350lbs max pressure	Alarm duration	15 seconds
Adjustable Length	22.25" to 43.7" (inch)	Alarm power req	9V (battery included)
Adjustable hole	15 ports	Button	Arm and Disarm
Gauge	1/16" (thickness)	Weight (net / gross)	1.85 lbs / 2.85 lbs
Color	White		

Warranty:

SecurityMan warrants that this product will be free from defects in materials and workmanship for one year or otherwise specified on the product packaging. This limited warranty shall commence from the date of purchase. SecurityMan Products warranty is not transferable and is limited to the original purchaser. If the product is found to be defective then, as your sole remedy and as the manufacturer's only obligation, SecurityMan will repair or replace the product. This warranty shall not apply to products that have been subjected to abuse, misuse, abnormal electrical or environmental conditions, normal wear and tear or any condition other than what can be considered normal use.

Copyright Notice

This manual is furnished under license and may be used or copied only in accordance with the terms of such license. Except as permitted by such license, no part of this publication may be reproduced, stored in a retrieval system, or transmitted, in any form or any means, electronic, mechanical, recording, or otherwise, including translation to another language or format, without the prior written permission of SecurityMan. The content of this manual is furnished for informational use only, is subject to change without notice, and should not be construed as a commitment by SecurityMan. SecurityMan assumes no responsibility or liability for any errors or inaccuracies that may appear in this book. All other product names, trademarks and registered trademarks in this document are the properties of their respective holders.

SecurityMan®
4601 E. Airport Drive, Ontario, CA 91761, USA Tel: 888-977-3777 or 909-230-6668 Fax: 909-230-6889 Email: info@securitymaninc.com Website: http://www.securitymaninc.com Copyright 2018 by SecurityMan v2.2

If you encounter any difficulty in the operation of this product after reading the manual, please feel free to contact us. You can reach us by phone at 1-888-977-3777 from 8:30 AM to 5:30 PM Monday through Friday (Pacific Standard Time) or by email techsupport@securitymaninc.com. We will be happy to answer your questions and help you in any way we can.

For Customer Service: 888-977-3777