

**User's Guide**  
**Wireless Door/ Window sensor**  
**for IWATCHALARM**  
**(Add-On)**

Model: SM-002M



© Copyright 2016

This manual is furnished under license and may be used or copied only in accordance with the terms of such license. Except as permitted by such license, no part of this publication may be reproduced, stored in a retrieval system, or transmitted, in any form or any means, electronic, mechanical, recording, or otherwise, including translation to another language or format, without the prior written permission of SecurityMan. The content of this manual is furnished for informational use only, is subject to change without notice, and should not be construed as a commitment by SecurityMan. SecurityMan Inc assumes no responsibility or liability for any errors or inaccuracies that may appear in this book.

## FCC Information

Notes on FCC's "Consistent Statement of Information" This product meet the requirements specified in Part 15 of FCC Regulation. Operation rests with the following two conditions:

- (1) The equipment should not cause any harmful interference.
- (2) The equipment must receive and process any interference, including any possible interference caused by operation mistakes.

After testing the product, we confirm that the camera complies with the provision for class C digital equipment in the 15th part in FCC regulations; and the receiver complies with the limitations for class B digital equipment in Part 15 of FCC regulation. The product generates, applies and emits radio waves. It might cause harmful interferences to wireless communication if not be installed and used following the description of the manual.

The product may cause interference in residential area, and the customer should take remedies to eliminate the interference on their own costs.

If the product causes any harmful interference to wireless equipment or disturbs the receiving of TV signals (it can be identified by turning on and off the product), you can solve the trouble by following methods:

- Readjust the product or put it in another place.
- Extend the distance between the equipment interfered and the product.
- Refer to dealers or experienced radio electrician for help.

## Warranty

SecurityMan Inc warrants that this product will be free from defects in title, materials and manufacturing workmanship for one year or otherwise specified on the product packaging. This limited warranty shall commence from the date of purchase. SecurityMan products warranty is not transferable and is limited to the original purchaser. If the product is found to be defective then, as your sole remedy and as the manufacturer's only obligation, SecurityMan will repair or replace the product. This warranty shall not apply to products that have been subjected to abuse, misuse, abnormal electrical or environmental conditions, normal wear and tear, or any condition other than what can be considered normal use.

## Warranty Disclaimer

SecurityMan Inc, makes no other warranties, express, implied or otherwise, regarding this product, and specifically disclaims any warranty for merchantability or fitness for a particular purpose. The exclusion of implied warranties is not permitted in some states and the exclusions specified herein may not apply to you. This warranty provides you with specific legal rights. There may be other rights that you have which vary from state to state.

## Limitation of Liability

The liability of SecurityMan Inc, arising from this warranty and sale shall be limited to a refund of the purchase price. In no event shall SecurityMan be liable for costs of procurement of substitute products or services, or for any lost profits, or for any consequential, incidental, direct or indirect damages,

however caused and on any theory of liability, arising from this warranty and sale. These limitations shall apply notwithstanding any failure of essential purpose of any limited remedy.

For Customer Service: 888-977-3777

## SecurityMan

4601 E. Airport Drive, Ontario, CA 91761, USA  
Tel: 888-977-3777 Tel: 909-230-6668 Fax: 909-230-6889  
Email: info@securitymaninc.com  
Website: <http://www.securitymaninc.com>  
Copyright 2016 by SecurityMan v2.2

## Features

- Transmits up to 450ft clear line of sight
- Real time security breach push notifications (requires SM-025H alarm host)

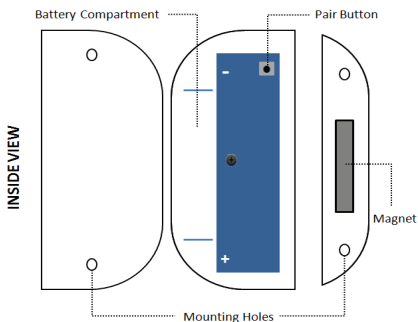
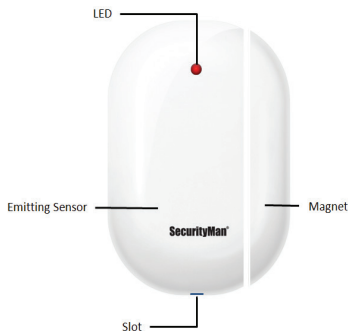
## Specifications

- Battery Type: 1.5V (1 x AA battery, last up to 1 year)
- LED's: 1 (Red)
- Transmission Distance: 450ft clear line of sight
- Transmission Frequency: 433Mhz
- Size (LxWxH): 3.0" x 2.0" x .75"

## Contents

- Wireless door/window sensor
- Magnetic strip
- Mounting accessories
- AA Battery
- Users manual

## Product Basics



## SETUP

Using a small flat head screw driver, gently pry open the back cover from the larger of the two pieces and insert the AA battery provided. Make sure you remove any plastic wrap covering the battery prior to inserting it and leave the top cover off. You can reattach the two pieces as soon as you are done pairing the sensor to the host.

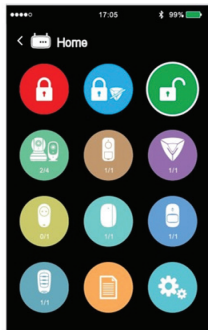


## ADDING THE SENSOR TO THE APP

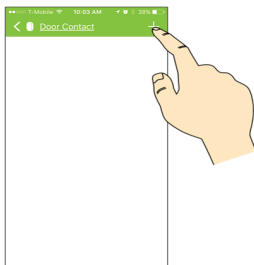
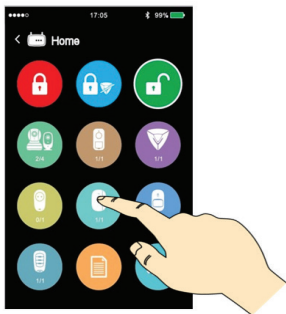
The **HOMEBOT** Smartphone app has a built in "user friendly" step-by-step interactive guide that you can follow when adding a device.

- Make sure you have the app installed on your Smartphone or tablet and that you have successfully added the alarm host to the app.
- Make sure the device(s) being added is no more than 2 feet from the host during the pairing process. You can place them in the desired location when completed.

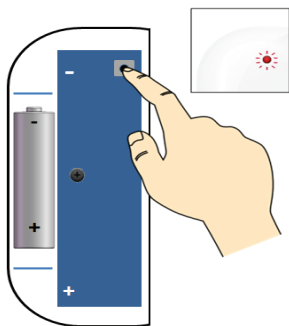
When you are ready, launch the app and set it to the control center as shown below.



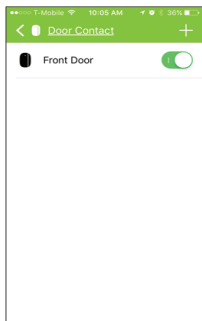
1. On the control center, tap on the **door/window sensor** icon and then tap on the + (add) symbol to begin adding the new sensor.



2. **“Press and Hold”** the pair button on sensor being added until the sensor's Red LED begins to flash rapidly and then press **next** on the Smartphone prompt. Once your sensor has been detected by the alarm host you will be given the opportunity to name (front door, living room, etc) the device prior to **saving** it. When done tap on the **Save** option.



3. Once the sensor has been successfully added to the host, re-attach the back cover and test the sensor by separating the small magnetic piece from the flat side of the larger piece. You should get a flashing red light every time the two pieces are separated.



## MOUNTING

For best results when mounted, please make sure that both pieces of the door window sensor are no more than  $\frac{1}{4}$  apart from each other when the door or window is closed.



If you encounter any difficulty in the operation of this product after reading the manual, please feel free to contact us. You can reach us by phone at 1-888-977-3777 from 8:30 AM to 5:30 PM Monday through Friday (Pacific Standard Time) or by email [techsupport@securitymaninc.com](mailto:techsupport@securitymaninc.com). We will be happy to answer your questions and help you in any way we can.