

SmartCamDVR Quick Start Guide

Compact High Definition Color Camera with Micro SD Recorder, Rechargeable Battery, and Remote Control

Charging: Please leave the camera charging for several hours until the battery is fully charged when using the SmartCamDVR for the first time.

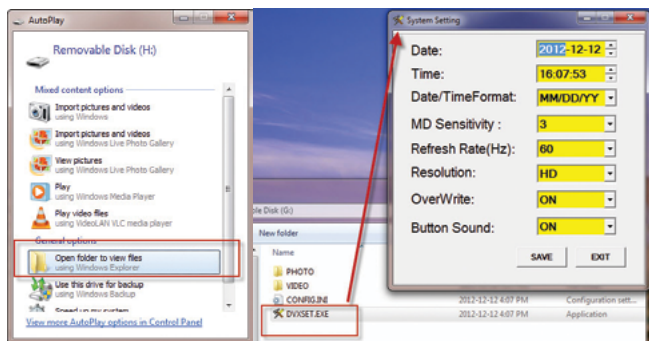
Quick Setup:

1. Insert a Micro SD card (not included, supports up to 32GB) into the Micro SD slot located on the right side of the camera.
2. Using the provided USB cable, plug the smaller end into the back of the camera and the other end into a computer as shown below.

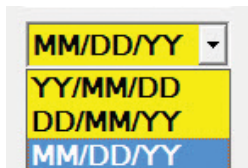
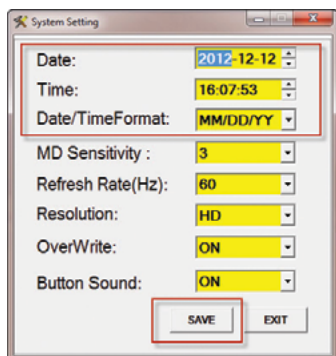


3. Once connected, an AutoPlay window will appear. Please click on the "Open folder to view files" option and then click on the "DVXSET.EXE" file to launch the System Setting application as illustrated below. The **System Setting** consists of the following settings:

- Date
- Time
- Date/Time Format
- MD Sensitivity
- Refresh Rate (Hz)
- Resolution
- OverWrite
- Button Sound



4. To set the date and time, click on the corresponding value as illustrated below, then use the Δ (up) and ∇ (down) arrows to adjust the date and time accordingly.



Select the Date/Time format to be displayed during video playback and click the **SAVE** button to save the changes.

NOTE: We recommend leaving the other settings as is (default settings).

5. Disconnect the USB cable from the computer after saving the changes.

NOTE: The SmartCamDVR can either be used as battery operated or by using the included power adapter.

Operation

LED indicators and what they mean.

LED Indicator	Description
Solid Red	Charging (off when fully charged)
Green Then Blue	Power On, Stand-by
Green Light then Flashes Blue	Photo Snapshot
Flash Blue Then Green	Video Recording
Rapid Flash Then Off	Low Power

Taking Photo or Video Recording

To start manual video recording or taking photos, move the event type switch (Video/Photo) to a desired recording preference. Press and hold the power button for 4 seconds as illustrated below.



Then press the button again or the **REC** button on the remote control to take a photo or manually record a video clip depending on the video/photo selection. When taking a photo, the indicator light will turn green follow by two beeps, and turn blue (stand-by) when finished recording. When recording a video clip, the indicator light will turn green follow by two beeps and remains green until manual video recording is stopped.

NOTE: Depending on the recording type selected, the above actions will either take a snap shot or begin manual recording.

IMPORTANT NOTICE: When stopping manual video recording, the SmartCamDVR will beep 5 times to notify the operator that there is new recorded file(s).

Taking Photo or Video Recording by Motion Detection

To take photo or record video based on motion detection, move the event Video/Photo Switch to select the desired recording preference. Press and hold the power button for 4 seconds to power on the SmartCamDVR as illustrated below.



To enable motion detection, press the button located on the back of the camera or press the **TRIGGER ON** button on the remote control.

NOTE: When enabling motion detection, the indicator LED will turn green followed by two beeps to inform the operator that motion detection is in stand-by mode.

Any movement made in front of the camera will initiate recording based on your recording preference (photo or video). In video mode, the blue indicator LED will flash once and stay solid green to indicate that the camera is recording. In photo mode, the blue indicator LED will flash three times (once for each photo taken) to indicate that photos were taken.

IMPORTANT NOTICE: There is a 3 second "pre-alarm" recording for all motion detection video recordings, totaling the total time per video clip to 18 seconds. In photo mode, each event captures 3 consecutive photos.

NEW FILE Alert Notification

Disabling motion detection (Video/Photo) with new events recorded: 5 Beeps
Disabling motion detection (Video/Photo) with no events recorded: 1 Beep